

Pitch:1.00X1.00mm(0.039")
Dual Rows Pin Header Straight Dip Type

MXCONN
M MCA2XX Series

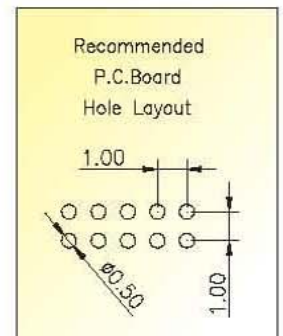
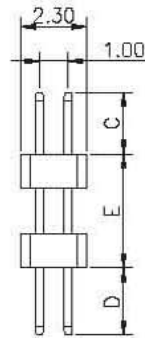
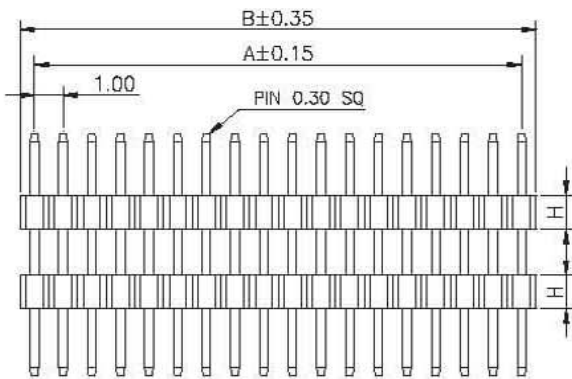
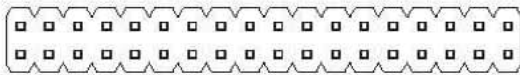
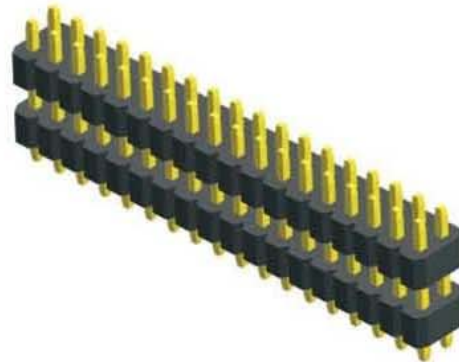
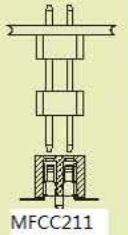
Specifications

Current Rating: 1.0 Ampere
Insulation Resistance: 1000MΩ Min
Dielectric Withstanding: 300V AC
Contact Resistance: 20mΩ Max
Operating Temperature: -40 °C to +105 °C

Materials

Contact Material: Brass
Insulation Material: Polyester,UL 94V-0
LCP

Mating with



| No. of Pins/Row | Dimension Information | | No. of Pins/Row | Dimension Information | | No. of Pins/Row | Dimension Information | | No. of Pins/Row | Dimension Information | |
|-----------------|-----------------------|-------|-----------------|-----------------------|-------|-----------------|-----------------------|-------|-----------------|-----------------------|-------|
| | A | B | | A | B | | A | B | | A | B |
| 02 | 1.00 | 2.00 | 12 | 11.00 | 12.00 | 22 | 21.00 | 22.00 | 32 | 31.00 | 32.00 |
| 03 | 2.00 | 3.00 | 13 | 12.00 | 13.00 | 23 | 22.00 | 23.00 | 33 | 32.00 | 33.00 |
| 04 | 3.00 | 4.00 | 14 | 13.00 | 14.00 | 24 | 23.00 | 24.00 | 34 | 33.00 | 34.00 |
| 05 | 4.00 | 5.00 | 15 | 14.00 | 15.00 | 25 | 24.00 | 25.00 | 35 | 34.00 | 35.00 |
| 06 | 5.00 | 6.00 | 16 | 15.00 | 16.00 | 26 | 25.00 | 26.00 | 36 | 35.00 | 36.00 |
| 07 | 6.00 | 7.00 | 17 | 16.00 | 17.00 | 27 | 26.00 | 27.00 | 37 | 36.00 | 37.00 |
| 08 | 7.00 | 8.00 | 18 | 17.00 | 18.00 | 28 | 27.00 | 28.00 | 38 | 37.00 | 38.00 |
| 09 | 8.00 | 9.00 | 19 | 18.00 | 19.00 | 29 | 28.00 | 29.00 | 39 | 38.00 | 39.00 |
| 10 | 9.00 | 10.00 | 20 | 19.00 | 20.00 | 30 | 29.00 | 30.00 | 40 | 39.00 | 40.00 |
| 11 | 10.00 | 11.00 | 21 | 20.00 | 21.00 | 31 | 30.00 | 31.00 | | | |

Ordering Information

| | | | | | | | |
|------------------|------------------------|---------------------|-----|------------------|-------------------|--------------------------|----------------------------|
| MMCA2 | XX | - | XX | XX | A | XXX | C1BA |
| Layer Option (H) | | No. of Pins per Row | | Standard Plating | | Pin Length (C / D / E) | |
| 01 | :H=1.20 (Single Layer) | 02 | ~40 | 02 | :Gold Flash | 007 | :C=3.00 , D=0.80 |
| 02 | :H=1.20 (Double Layer) | | | | Selective Plating | 015 | :C=3.00 , D=2.00 , E=17.00 |
| 03 | :H=1.00 (Double Layer) | | | 01 | :Tin | 003 | :C=1.90 , D=1.90 , E=2.55 |
| | | | | | | Selective Length | |
| | | | | | | Custom Length Available | |

*Standard Packaging:Box