

Pitch:1.00X1.00mm(0.039")
Dual Rows Pin Header Straight Dip Type

MXCONN
MMCA210 Series

1.00 Male Dip Type

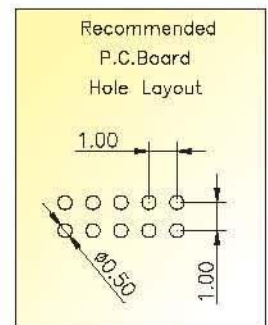
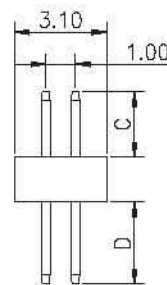
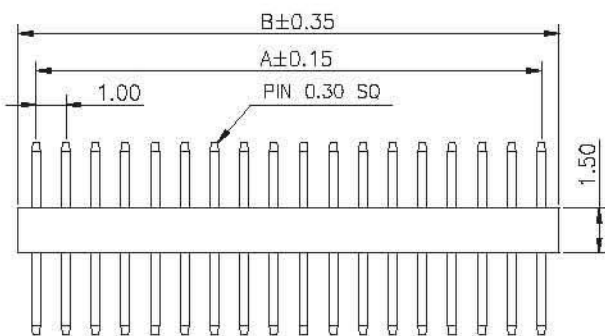
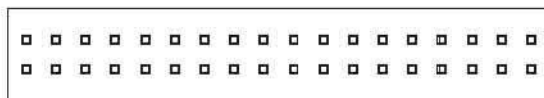
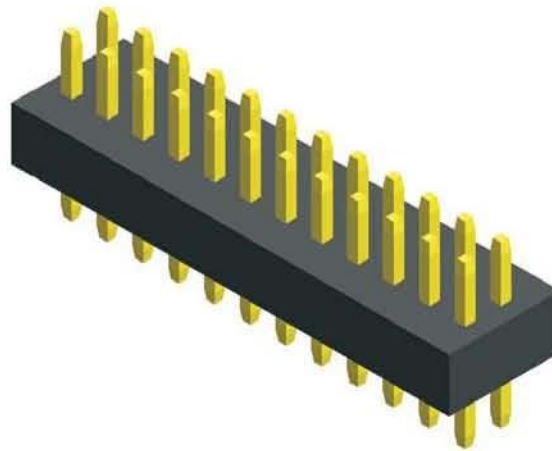
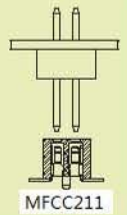
Specifications

- Current Rating: 1.0 Ampere
- Insulation Resistance: 1000MΩ Min
- Dielectric Withstanding: 300V AC
- Contact Resistance: 20mΩ Max
- Operating Temperature: -40°C to +105°C

Materials

- Contact Material: Phospor Bronze
- Insulation Material: Polyester,UL 94V-0 LCP

Mating with



No. of Pins/Row	Dimension Information		No. of Pins/Row	Dimension Information		No. of Pins/Row	Dimension Information		No. of Pins/Row	Dimension Information	
	A	B		A	B		A	B		A	B
02	1.00	2.20	12	11.00	12.20	22	21.00	22.20	32	31.00	32.20
03	2.00	3.20	13	12.00	13.20	23	22.00	23.20	33	32.00	33.20
04	3.00	4.20	14	13.00	14.20	24	23.00	24.20	34	33.00	34.20
05	4.00	5.20	15	14.00	15.20	25	24.00	25.20	35	34.00	35.20
06	5.00	6.20	16	15.00	16.20	26	25.00	26.20	36	35.00	36.20
07	6.00	7.20	17	16.00	17.20	27	26.00	27.20	37	36.00	37.20
08	7.00	8.20	18	17.00	18.20	28	27.00	28.20	38	37.00	38.20
09	8.00	9.20	19	18.00	19.20	29	28.00	29.20	39	38.00	39.20
10	9.00	10.20	20	19.00	20.20	30	29.00	30.20	40	39.00	40.20
11	10.00	11.20	21	20.00	21.20	31	30.00	31.20			

Ordering Information

MMCA210 - **XX** **XX** A **XXX**
 No. of Pins per Row Standard Plating Pin Length (C / D)
 02 ~40 02 :Gold Flash 010 :C=4.00 , D=2.00
 Selective Plating 700 :C=1.90 , D=3.00
 01 :Tin Selective Length
 Custom Length Available

*Standard Packaging:Box